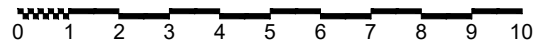
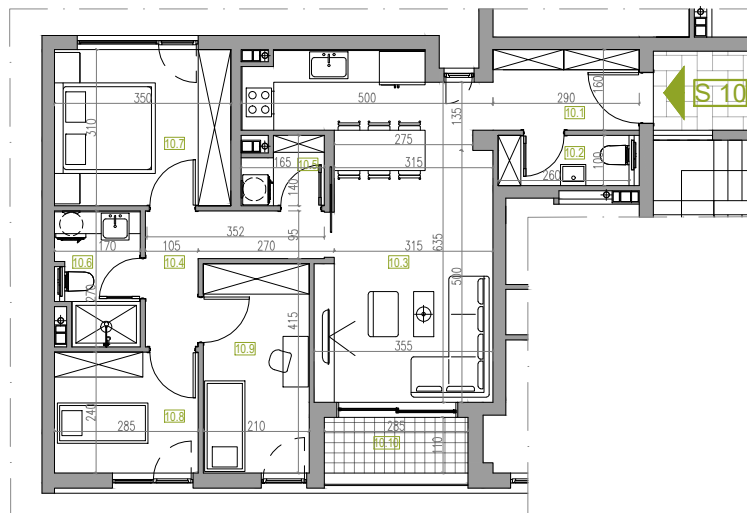
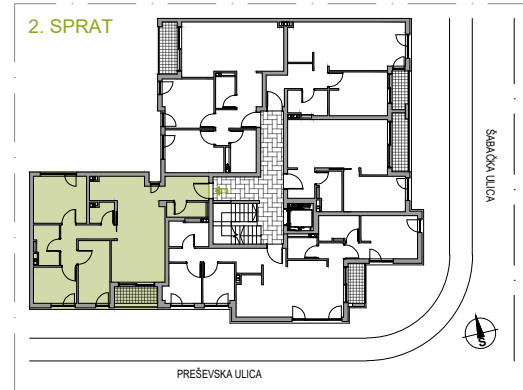




## STAN BR. 10

SPRAT: 2  
BROJ SOBA: 2.5  
POVRŠINA: 73.10 m<sup>2</sup>



### STAN BR. 10

OZN.	NAMENA PROSTORIJE	P (m <sup>2</sup> )
10.1	hodnik	4.86 m <sup>2</sup>
10.2	wc	2.60 m <sup>2</sup>
10.3	dnevni boravak/trpezarija/kuhinja	24.66 m <sup>2</sup>
10.4	hodnik	5.21 m <sup>2</sup>
10.5	vešeraj	2.09 m <sup>2</sup>
10.6	kupatilo	4.13 m <sup>2</sup>
10.7	soba	10.85 m <sup>2</sup>
10.8	soba 1/2	6.84 m <sup>2</sup>
10.9	soba 1/2	8.71 m <sup>2</sup>
10.10	terasa	3.14 m <sup>2</sup>
<b>STAN BR. 10</b>		<b>73.10 m<sup>2</sup></b>