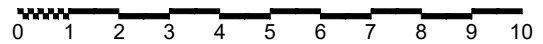
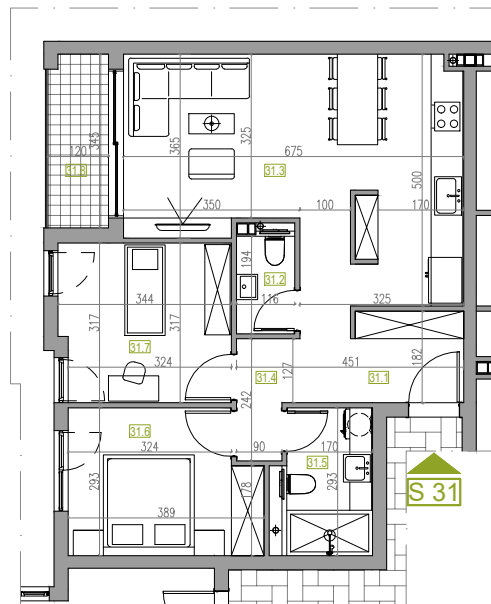
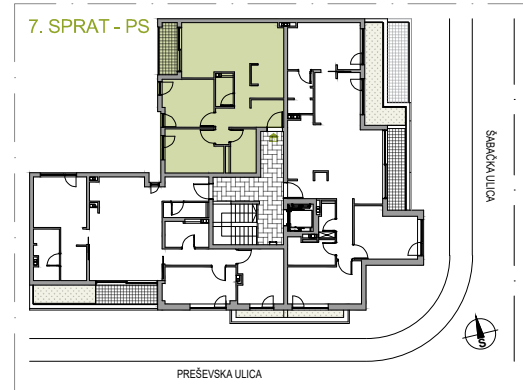




## STAN BR. 31

SPRAT: 7 (PS)  
BROJ SOBA: 2  
POVRŠINA: 69.30 m<sup>2</sup>



### STAN BR. 31

| OZN.        | NAMENA PROSTORIJE                 | P (m <sup>2</sup> )  |
|-------------|-----------------------------------|----------------------|
| 31.1        | hodnik                            | 7.78 m <sup>2</sup>  |
| 31.2        | wc                                | 2.24 m <sup>2</sup>  |
| 31.3        | dnevni boravak/trpezarija/kuhinja | 26.36 m <sup>2</sup> |
| 31.4        | hodnik                            | 2.57 m <sup>2</sup>  |
| 31.5        | kupatilo                          | 4.98 m <sup>2</sup>  |
| 31.6        | soba                              | 10.65 m <sup>2</sup> |
| 31.7        | soba                              | 10.64 m <sup>2</sup> |
| 31.8        | terasa                            | 4.08 m <sup>2</sup>  |
| STAN BR. 31 |                                   | 69.30 m <sup>2</sup> |